



Calcium Chloride in Dust Control Applications

Still the Most Effective Dust Control Agent

Why is dust control important?

- Road officials must contend with higher maintenance costs because a dusty road is a deteriorating road. Once the fine material is lost, the load-bearing aggregate will soon follow. Loss of fines and aggregate results in ruts, potholes and washboards that require costly spot repairs and frequent bladings to keep the road in acceptable condition.
- Road users face the serious safety issue of reduced visibility and also the prospect of loose gravel causing cracked windshields, chipped paint and/or broken headlights.
- Local residents must contend with large quantities of dust drifting into their living environment, reducing their quality of life and increasing their chances of developing respiratory health problems.

Why use calcium chloride for dust control?

- Calcium chloride attracts moisture from the air, keeping the road damp even under hot, dry conditions. The moisture film provides a cohesive force that binds aggregate particles together, resulting in a hard and compact surface.
- A beneficial residual effect accumulates with consistent application year after year. As calcium chloride becomes established deeper in the road base, stability improves and frost damage is prevented.
- Calcium chloride manufactured by OxyChem has been used for dust control applications since the early 1920's. No other dust control product comes close to this level of proven performance.

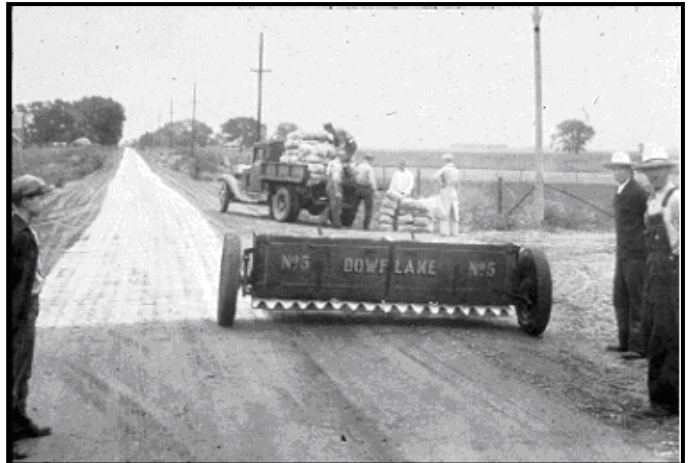
How can road managers with tight budgets justify expenditures for dust control with calcium chloride?

Several years ago, road managers in South Africa asked this question and subsequently launched a series of field trials to collect the necessary data to develop an answer.¹ Here are some of the results from their work.

- Blading frequency of roads treated with calcium chloride decreased by about 50% and the expected interval between re-graveling increased from 7 to 14 years.
- A cost/benefit analysis of various maintenance alternatives for a road with 342 ADT indicated that annual application of calcium chloride with a 90 day blading cycle maximized the economic benefits for road managers and road users.
- The greatest economic benefits were realized when aggregate replacement costs and ADT are both high.

This work shows that a dust control program with calcium chloride can be considered an investment that provides a good rate of return, in addition to improving the quality of life for road users and neighbors alike.

That was then...



This is now...



Calcium Chloride in Dust Control Applications

Guidelines for Using Calcium Chloride in Dust Control

- Blade in the spring while road moisture content and humidity are relatively high. Water road surface prior to blading unless rain has fallen within the last two days. Remove ruts, washboards, potholes and mix in loose aggregate.

- Good drainage is essential to good performance. Shape roads to a 4% or greater crown. Ditches, shoulders and culverts should be reshaped and cleaned as needed.

- Recommended application rates are provided in Tables 1 and 2. When applying solid products, it is usually preferable to water the surface prior to spreading the product. If the road is kept open to traffic while solid product remains on the surface, signs should be posted directing motorists to take appropriate precautions.

- Applications should not be started during heavy rainfall or if rain is threatening.

- For best performance, aggregate should meet the criteria shown in Table 3.

- During unusually long periods of hot, dry weather, water the road surface during early morning hours as needed to reconstitute the treatment. Re-apply in late summer or early fall as needed.

Frequently Asked Questions

Will an unpaved road treated with calcium chloride corrode my vehicle?

Noticeable vehicle corrosion is not likely to result from driving on an unpaved surface treated with calcium chloride. The calcium chloride tends to stay bound to the soil in the road, so there is little chance for significant contact with exposed metal on a vehicle.

Are dust control treatments with calcium chloride safe for the environment?

Calcium chloride dust control applications reduce sediment load on waterways and save thousands of tons of aggregate that otherwise would be mined from noisy and unsightly gravel quarries. Airborne particulate matter is reduced, improving regional air quality. Ground and surface waters are not likely to be impacted. While over-exposure to chloride has the potential to injure trees, this rarely occurs in dust control applications that follow current standard practices.

Additional Information

To ensure the safe and effective use of OxyChem calcium chloride, please thoroughly review the product's Material Safety Data Sheet prior to use. To obtain an MSDS, please visit our web site www.oxycalciumchloride.com.

Table 1. Dust Control Application Rates (US Units)

Product	Unpaved Roads	Truck Terminals & Parking Lots	Mine Haul & Logging Roads
LIQUIDOW™ 35%	0.30 gal/yd ² 2117 gal/lane-mi	0.33 gal/yd ² 2352 gal/lane-mi	0.39 gal/yd ² 2744 gal/lane-mi
LIQUIDOW™ 38%	0.27 gal/yd ² 1901 gal/lane-mi	0.30 gal/yd ² 2112 gal/lane-mi	0.35 gal/yd ² 2464 gal/lane-mi
LIQUIDOW™ 42%	0.24 gal/yd ² 1664 gal/lane-mi	0.26 gal/yd ² 1849 gal/lane-mi	0.31 gal/yd ² 2157 gal/lane-mi
DOWFLAKE™ Xtra 83-87%	1.38 lb/yd ² 4.84 ton/lane-mi	1.56 lb/yd ² 5.49 ton/lane-mi	1.83 lb/yd ² 6.45 ton/lane-mi
ANHYDROUS 94-97%	1.23 lb/yd ² 4.33 ton/lane-mi	1.39 lb/yd ² 4.90 ton/lane-mi	1.64 lb/yd ² 5.77 ton/lane-mi

*lane-mi equals 4 yards wide by 1760 yards long

Table 2. Dust Control Application Rates (Metric Units)

Product	Unpaved Roads	Truck Terminals & Parking Lots	Mine Haul & Logging Roads
LIQUIDOW™ 35%	1.36 liter/m ² 5027 liter/lane-km	1.51 liter/m ² 5604 liter/lane-km	1.76 liter/m ² 6511 liter/lane-km
LIQUIDOW™ 38%	1.22 liter/m ² 4514 liter/lane-km	1.36 liter/m ² 5032 liter/lane-km	1.58 liter/m ² 5846 liter/lane-km
LIQUIDOW™ 42%	1.07 liter/m ² 3951 liter/lane-km	1.19 liter/m ² 4404 liter/lane-km	1.38 liter/m ² 5116 liter/lane-km
DOWFLAKE™ Xtra 83-87%	0.75 kg/m ² 2.76 tonne/lane-km	0.85 kg/m ² 3.13 tonne/lane-km	0.99 kg/m ² 3.68 tonne/lane-km
ANHYDROUS 94-97%	0.67 kg/m ² 2.47 tonne/lane-km	0.76 kg/m ² 2.80 tonne/lane-km	0.89 kg/m ² 3.29 tonne/lane-km

*lane-km equals 3.7 meters wide by 1000 meters long

Table 3. Recommended Aggregate Characteristics

Characteristic	Preferred	Acceptable
Maximum Size	¾ inch	1 inch
Grading Description	Well graded – not uniform or skip graded	
Percent Pass #4	55 to 70	50 to 75
Percent Pass #200 (Nonplastic)	14 to 17	12 to 17
Percent Pass #200 (Plastic)	12 to 15	8 to 15
Plasticity Index	2 to 9	Nonplastic
Los Angeles Abrasion	Less than 30	Less than 40
Percent Fracture, one face	Greater than 85%	Greater than 75%

¹ "The Incorporation of Dust Palliatives as a Maintenance Option in Unsealed Road Management Systems." D. Jones, E. Sadzik, and I. Wolmarans; Paper from 20th ARRB Conference, 19-21 March 2001

Originally Published August 2006
Form 173-01741-0809



Occidental Chemical Corporation
A subsidiary of Occidental Petroleum Corporation

5005 LBJ Freeway, Suite 2200
Dallas, Texas 75244-6119
888-293-2336

Important: The information presented herein, while not guaranteed, was prepared by technical personnel and is true and accurate to the best of our knowledge. NO WARRANTY OF MERCHANTABILITY OR OF FITNESS FOR A PARTICULAR PURPOSE, OR WARRANTY OR GUARANTY OF ANY OTHER KIND, EXPRESS OR IMPLIED, IS MADE REGARDING PERFORMANCE, SAFETY, SUITABILITY, STABILITY OR OTHERWISE. This information is not intended to be all-inclusive as to the manner and conditions of use, handling, storage, disposal and other factors that may involve other or additional legal, environmental, safety or performance considerations, and OxyChem assumes no liability whatsoever for the use of or reliance upon this information. While our technical personnel will be happy to respond to questions, safe handling and use of the product remains the responsibility of the customer. No suggestions for use are intended as, and nothing herein shall be construed as, a recommendation to infringe any existing patents or to violate any Federal, State, local or foreign laws.